

LOIS LAMBERT GALLERY

at Bergamot Station
2525 Michigan Ave E3
Santa Monica, CA 90404

FOR IMMEDIATE RELEASE

Contact: Maria Guerrero
Assistant Director
maria@loislambertgallery.com
310.829.6990

PAPER GIANTS L.A. Ky Anderson, Meg Lipke & Vicki Sher

May 12th, 2018 – July 7th, 2018
Opening reception Saturday, May 12th, 6-9pm



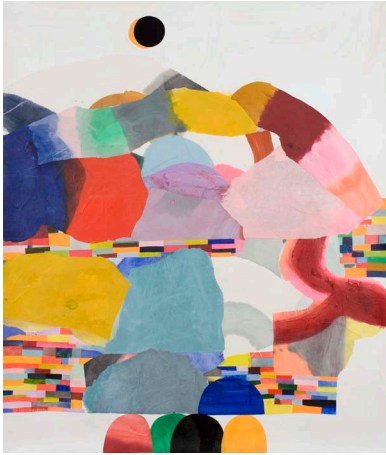
Meg Lipke, "Convent", Ink and acrylic with resist, 72" x 60"



Ky Anderson, "Knocked Down", Acrylic on paper, 72"x60"

SANTA MONICA, CA – Lois Lambert Gallery presents Paper Giants LA, by artists Ky Anderson, Meg Lipke and Vicki Sher. Although each of these artists maintain individual studios and have individual exhibitions they have joined together as a means of investigating and maintaining individual ideas within a shared space and format. The only requirement for each artist is that they work on 72" x 60" thick printmaking paper, which allows each artist to explore the nature of works on paper and the scale of the piece. The installation of Paper Giants is intentionally casual. The work is mostly unframed and pinned only from the top mimicking the informality of their studio and highlighting the connection the three artists have behind the scenes. The artists intention is to continue this collaboration into the future, evolving alongside each artist's practice, and reflecting their individual developments over time.

The artists regularly discuss their works' progression. This communication and mutual awareness is seen as a vital part of the project. As each artist moves from their own personal work to their collaboration, the exhibition's parameters become the formula for an osmosis of creativity and inspiration without sacrificing the integrity of each artist's aesthetic. The format allows for their mutual exploration into content, form, and materials. Each artist incorporates materials from their individual studio practices: Anderson draws and paints; Lipke batiks and draws; Sher paints, draws and collages. The works line up side-by-side, acknowledging association while maintaining distinct voices. Anderson's pieces could be recognized by her bluish and greenish palette. Sher's work becomes a place of pause between Lipke's and Anderson's, with her use of white space and blocks of pastel colors. Lipke's work offers bursts of complex color combinations like splashes of orange on a mauve wash, or a bright aqua blue composition with bold grid over all of it.



Vicki Sher, "Rainbow River", Acrylic and collage on paper , 72" x 60"

KY ANDERSON lives and works in Brooklyn, NY. Anderson's paintings and works on paper have been exhibited all over the US, Canada and Europe, with recent solo exhibitions in New York and Missouri along with numerous group shows and art fairs. Her work has been shown at public institutions including The Nerman Museum of Contemporary Art and Moore College of Art. Anderson's work is in the permanent collection of The Nerman Museum of Contemporary Art and Kansas University Medical Center as well as many private collections in the US and beyond. Anderson received her BFA from the Kansas City Art Institute.

MEG LIPKE'S work has been exhibited nationally and internationally and has been reviewed in Art in America, The Village Voice, New York Times, Art Forum and many online publications. She splits her time and studio practice between Bushwick, Brooklyn and Ghent, in upstate New York. Lipke received her MFA from Cornell University and has taught at SUNY Albany, Cornell University, and Pratt Institute in Brooklyn. Lipke's work is in private collections in LA, NYC, Kansas City, Paris and London and the Ahmanson Collection in Irvine, CA.

VICKI SHER has exhibited her work in numerous solo and group exhibitions through out the US. Sher's work has been shown in public institutions including the Moore College of Art, Philadelphia, PA and The Phillips Museum at Franklin and Marshall College, Lancaster, PA. She is the recipient of a MacDowell Colony Fellowship award and a VCCA Fellowship award. She has participated in art fairs, including VOLTA Basel, NADA and PULSE. Sher received her BFA from Cornell University, and her MFA from the University of Iowa. Sher's work is included in the Temple University Collection in Pennsylvania and other private collections

The discussions and artwork for Paper Giants began in 2013. Previous exhibitions, at Moore College of Art, Philadelphia, PA, The Volland Store, Alma KS, and Proto Gallery, Hoboken, NJ all included similar installations of the large drawings filling the gallery walls. Paper Giants LA marks the fourth exhibition of this ongoing project.